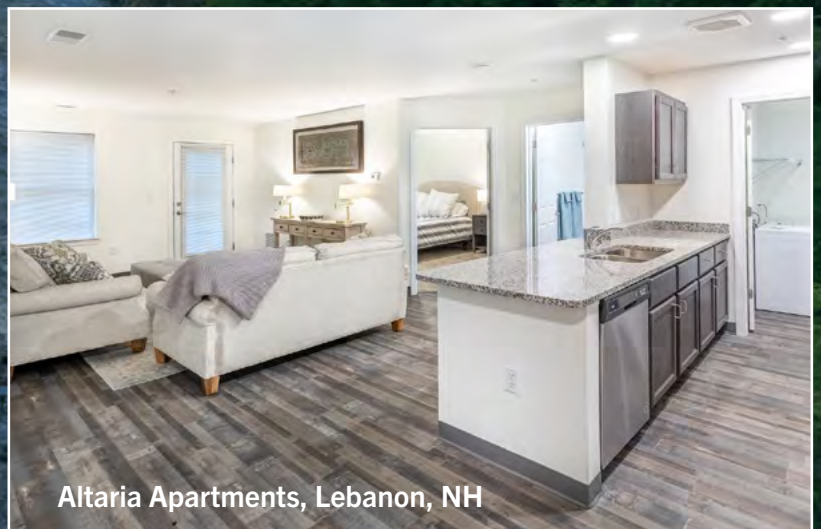


Rental Housing Guide

Quechee Gorge
- Quechee, VT



Rental Housing Guide

Relocating to the Upper Valley?

What is the Upper Valley?

The Upper Valley is comprised of several towns in Vermont and New Hampshire. In New Hampshire, towns include Hanover, Lebanon, Enfield, Canaan, Grantham, Sunapee, Lyme, and Orford. In Vermont, towns include Norwich, Hartford, Hartland, Thetford, and Strafford.

What are the employment tax differences between VT and NH?

The State of NH does not have an income tax and the State of VT does. For additional information regarding the State of VT employment tax rates go to <https://tax.vermont.gov/individuals/personal-income-tax/rates>. To determine how living in one state versus the other will affect your income, please contact your accountant. For estimates, you may also wish to try a free calculator like this one <https://smartasset.com/taxes/vermont-tax-calculator>.

If work in NH but live in VT, what state taxes will I pay?

If you work in NH but live in VT, you will pay VT state income taxes (and, no income tax in NH because there is no income tax).

If work in VT but live in NH, what state taxes will I pay?

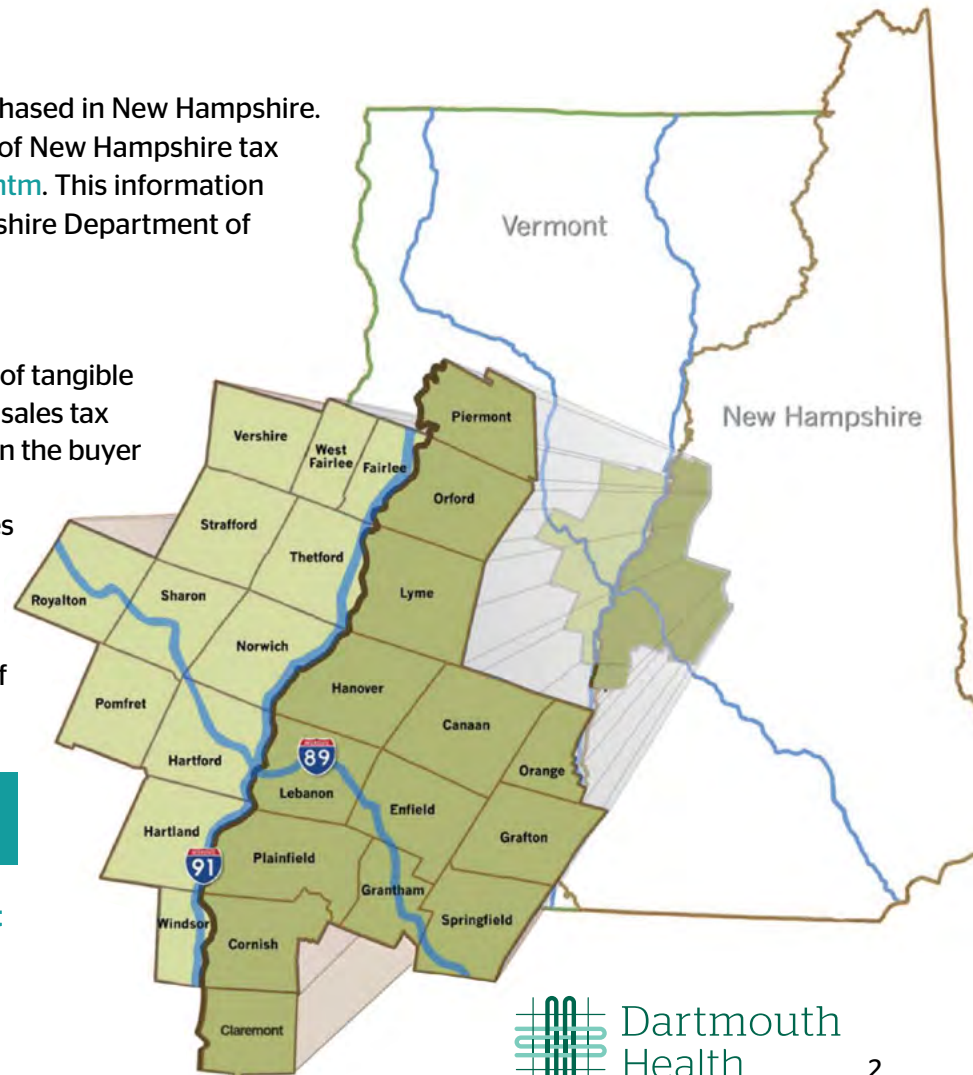
If you work in VT but live in NH, you will pay VT state income taxes (and, no income tax in NH because there is no income tax).

Are there sales taxes in NH?

No, there is no general sales tax on goods purchased in New Hampshire. For additional information regarding the State of New Hampshire tax laws, go to <https://www.revenue.nh.gov/index.htm>. This information was taken directly from the Official New Hampshire Department of Revenue Administration website.

Are there sales taxes in VT?

Vermont Sales Tax is charged on the retail sales of tangible personal property unless exempted by law. The sales tax rate is 6% (2023). Vermont Use Tax is imposed on the buyer at the same rate as the sales tax. For additional information regarding the State of Vermont sales and use tax, please go to <https://tax.vermont.gov/business-and-corp/sales-and-use-tax>. This information was taken directly from the Official Vermont Government website Agency of Administration Department of Taxes.



Contact Information:

Dartmouth Health | Workforce Development

Jennifer B. Sargent, MBA

Program Manager, Relocation Services

Phone: 603-653-3244

Email: DHRelocation@hitchcock.org

Upper Valley Rentals

[132 South Main St.](#)


White River Junction, VT 05001

Price Range: \$1,500-\$2,210

Pets: Cats only, 2 max

*DH Managed Units \$1,500 Deposit

Contact: Zach Mattos

 603-727-9024

zach@ledgeworks.com

[195 Mechanic Street](#)


Lebanon, NH 03766

Price Range: \$1,400-\$3,300

Pets: Cats, Dogs negotiable on 1st floor only

*DH Managed Units \$1,500 Deposit for Studio & 1 bed,
\$2,000 for 2 bed

Contact: Jill Kenney

 603-632-5757

Jill@vanessastonere.com


[241 South Main St.](#)

White River Junction, VT 05001

Price Range: \$1,100-\$3,500

Pets: Cats, Dogs negotiable

Contact: Zach Mattos

 603-727-9024

zach@ledgeworks.com


[75 Bank St.](#)

Lebanon, NH 03766

Price Range: \$1,200-\$1,800

Pets: Cats only, 2 max

Contact: Zach Mattos

 603-727-9024

zach@ledgeworks.com

[Altaría Luxury Apartments](#)

56 Alta Blvd.


Lebanon, NH 03766

Price Range: \$2,150-2,900

Pets: Cats, Dogs negotiable, 2 max

*DH Managed Units \$1,500 Deposit for 1 beds,
\$2,000 for 2 beds

Contact: Chris Morneault

 603-666-4518

[Audubon Timberwood Commons](#)

6 Timberwood Dr.


Lebanon, NH 03766

Price Range: \$2,115-\$2,835

Pets: Cats & Dogs, 2 max

*DH Employees \$300 Deposit

Contact: Debra Basaldua

 603-727-9248

debra@timberwoodcommons.com

[Emerson Place](#)


21 Spencer St.

Lebanon, NH 03766

Price Range: \$2,525-\$2,700

Pets: Cats & Dogs, 2 max

Contact: Brenda Snow

 603-448-9605

emersonplace@doblent.com

[Hanover Place Residences](#)


25 Foothill Street

Lebanon, NH 03766

Price Range: \$1,800-\$3,000

Pets: Cats & Dogs, 2 max

Contact: Tricia Crawford

 802-356-3297

tcrawford@aam15@com

[Juniper on Summit](#)


6 Juniper Circle

Lebanon, NH 03766

Price Range: \$1,087-\$1,516 per person

Pets: Cats & Dogs, 2 max

Contact: Megan Phillips

 603-727-4652

Leasing@summitonjuniper.com

[Meadowbrook Village](#)


Highland Ave.

West Lebanon, NH 03784

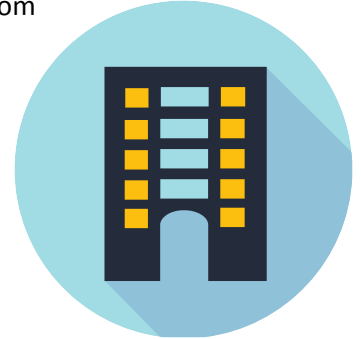
Price Range: \$1,155-\$1,655

Pets: Cats & Dogs, 2 max

Contact: Meredith Goodness

 603-298-5610

mgoodness@hodgescompanies.com



Upper Valley Rentals

Moseley Associates

48 Stagecoach Rd.
White River Junction, VT 05001
Price Range: \$1,100-\$3,500
Pets: Varies by location
Contact: Megan Moseley
📞 802-296-2600
megan@moseleyassociates.net

Prospect Hills

25 Mountain View Dr.
Lebanon, NH 03766
Price Range: \$2,875-\$3,240
Pets: Cats & Dogs, 2 max
Contact: Lucas Leo
📞 884-807-8846
prospecthill@bradysullivan.com

Purcell Properties

Valley Wide (NH/VT)
Price Range: \$1,100-\$2,200
Pets: Varies by location
Contact: Stephanie Gray
📞 603-448-1335
rentals@purcellprop.com

Real Property Management

Valley Wide (NH/VT)
Price Range: \$1,100-\$3,700
Pets: Varies by location
Contact: Charmaine Denysschen
📞 603-448-8808
Leasing@rpmbeacon.com

Stone Farm

42 Wolf Road
Lebanon, NH 03766
Price Range: \$2,275-\$2,750
Pets: Cats & Dogs, 2 max
*DH Employees Free Application & 50% off Deposit
Contact: Beckylynn Collins
📞 603-448-9400
stonefarm@briarcliffmgt.com

The Marek South

343 Mt. Support Rd.
Lebanon, NH 03756
Price Range: \$2,200-\$2,700
Pets: Cats & Dogs
Contact: Emily Robertson
📞 603-550-7777
emily.robertson@greystar.com
Opening Fall 2023

The Simpson Companies

PO Box 1081
Norwich, VT 05055
Price Range: \$1,300-\$3,500
Pets: Varies by location
Contact: Rachel Bertrand
📞 802-295-7961
Rachel@simpsoncompanies.com



132 S. Main Street, White River Jct, VT

Claremont Rentals

Claremont Village

12 Block Avenue
Claremont, NH 03743

Price Range: \$1,600

Pets: Cats only, 2 max

Contact: Debora Matteau

📞 603-543-1044

sulcocorp@comcast.net

Monadnock Mills

29 Water St.
Claremont, NH 03743

Price Range: \$1,200-\$2,200

Pets: Cats & Dogs, 2 max

*DH Managed Units \$1,500 Deposit

Contact: Sammy Launder

📞 978-992-7681

slaunders@chinburg.com

New England Family Housing

368 NH Rte. 104
New Hampton, NH 03256

Price Range: \$825-\$1,300

Pets: Varies by location

Contact: Leslie Wright

📞 603-744-3551

info@nefamilyhousing.com

Princeton Commons

2 Winter St.
Claremont, NH 03743

Price Range: \$1,425-\$1,700

Pets: Cats & Dogs, 2 max

*DH Employees get \$50 off monthly rent

Contact: Emily Loring

📞 603-389-6760

princetoncommons@princetonproperties.com

Real Property Options

31 Pleasant Street
Claremont, NH 03743

Price Range: \$800-\$2,500

Pets: Varies by location

Contact: Rebecca Hastings

📞 603-504-6460

rbhastings20@gmail.com

River Valley Property Management

10 State Street
Windsor, VT 05089

Price Range: \$900-\$3,500

Pets: Varies by location

Contact: Cindy Todd

📞 802-674-4141

rentals@rivervalleypm.com



195 Mechanic Street, Lebanon, NH



Monadnock Mills, Claremont, NH