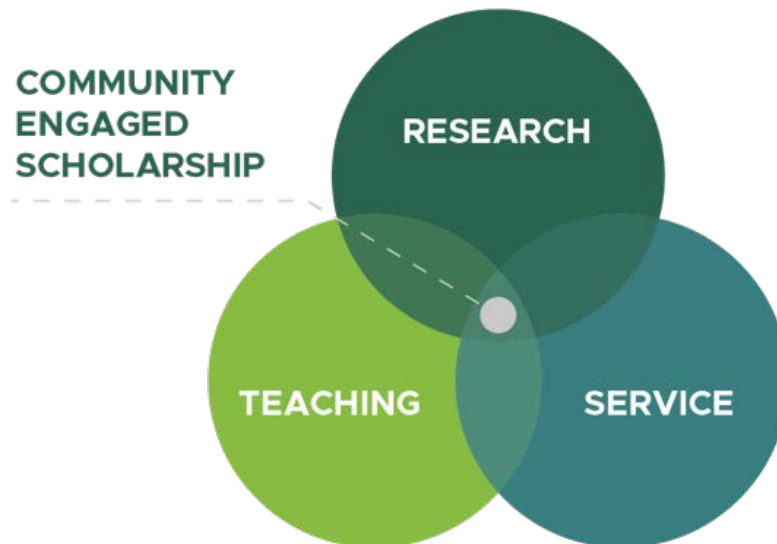


Ethical Considerations in Community Engaged Scholarship

Health-Related Community Engaged Scholarship (CES)

Health-related Community Engaged Scholarship (CES) involves applying academic expertise to address real-world issues in collaboration with community members. It is meaningful collaboration benefitting communities, healthcare systems, and academic partners.



Characteristics of Health-Related CES

- Grounded in reciprocity
- Respectful
- Ensures community and scholars all benefit from partnership
- Interdisciplinary

Health-Related CES draws on:

- Public Health
- Quality Improvement
- Implementation Science
- Social determinants of health
- Education for health equity &
- Community well-being

Bioethics Principles

Bioethics Principles apply to Health-Related CES

Belmont Report Core Principles

RESPECT

BENEFICENCE

JUSTICE

Federal regulations require nine functions for Human Subjects Projection:

MINIMIZE RISK

REASONABLE RISK : BENEFIT RATIO

FAIR SUBJECT SELECTION

ADEQUATE MONITORING

INFORMED CONSENT

PRIVACY AND CONFIDENTIALITY

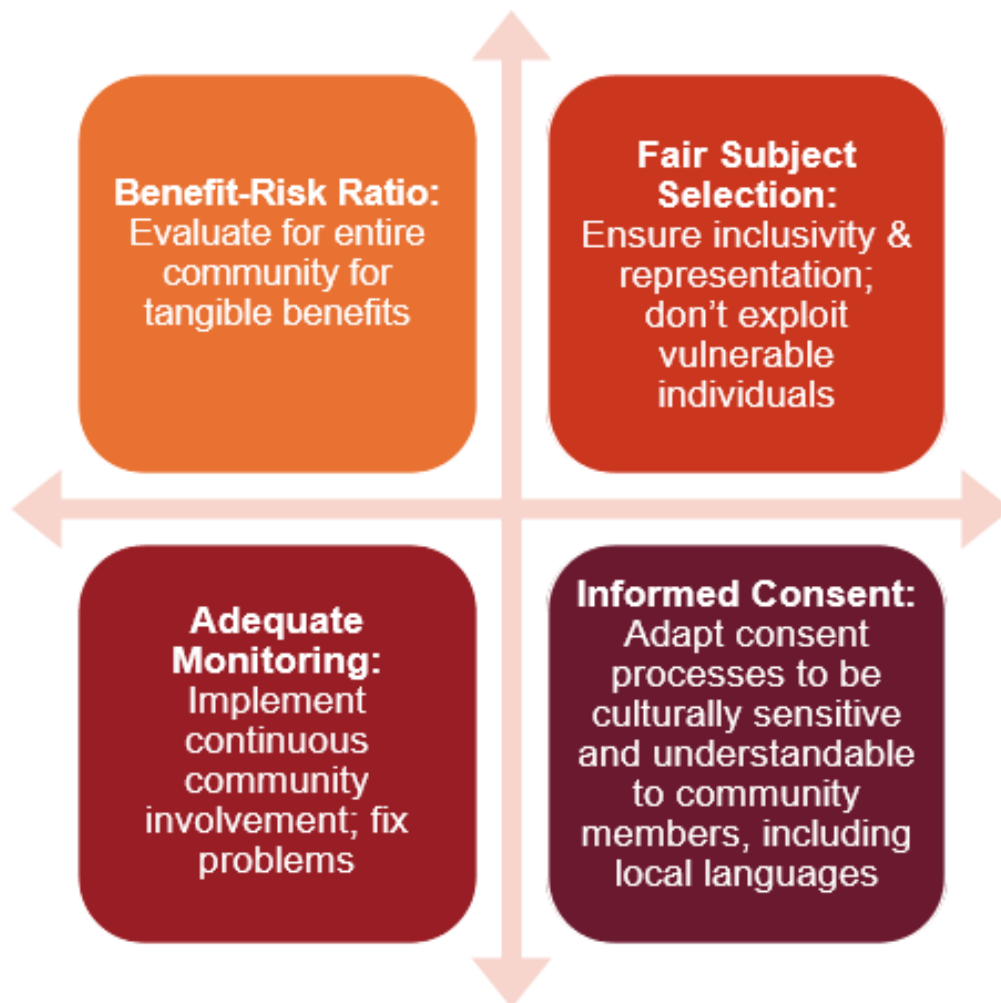
CONFLICTS OF INTEREST

ADDRESS VULNERABILITY

HSP TRAINING

Beyond Belmont: Considerations for Community Engaged Research (CEnR)

These expanded considerations ensure that community engaged research and health-related (CES) are conducted ethically and respectfully.



Privacy and Confidentiality: protect community-level information that could be stigmatizing

Conflicts of Interest: Be transparent about potential COI; involve community members in managing conflicts

Address Vulnerabilities: Pay attention to unique vulnerabilities such as historical exploitation or marginalization

Training: Provide comprehensive training for researchers and community members on ethical research practices and specific needs of CEnR

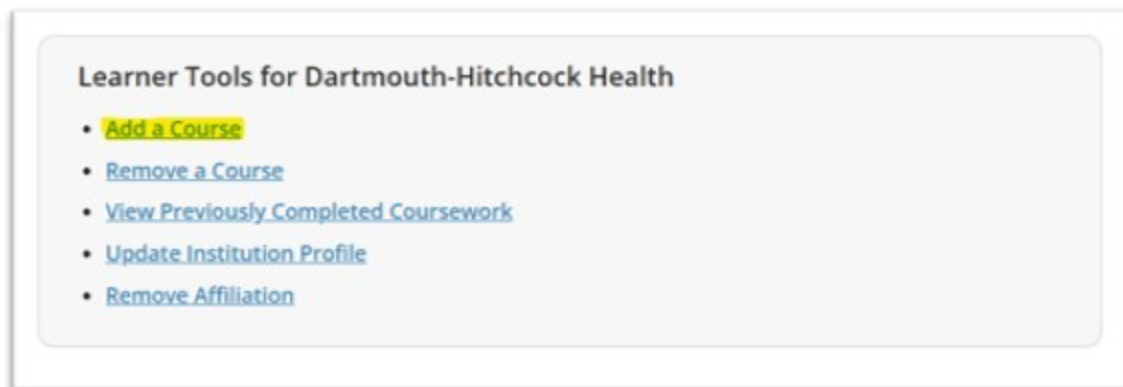
The CITI program offers National Institutes of Health-approved courses to train researchers and community members on ethical and practical considerations for design, review, and conduct of Community Engaged Research and Community Based Participatory Research (CBPR). Thanks to the collaborative effort of Dartmouth Health and Dartmouth College, the module is now available to Dartmouth staff and faculty.

<https://about.citiprogram.org/course/community-engaged-and-community-based-participatory-research/>

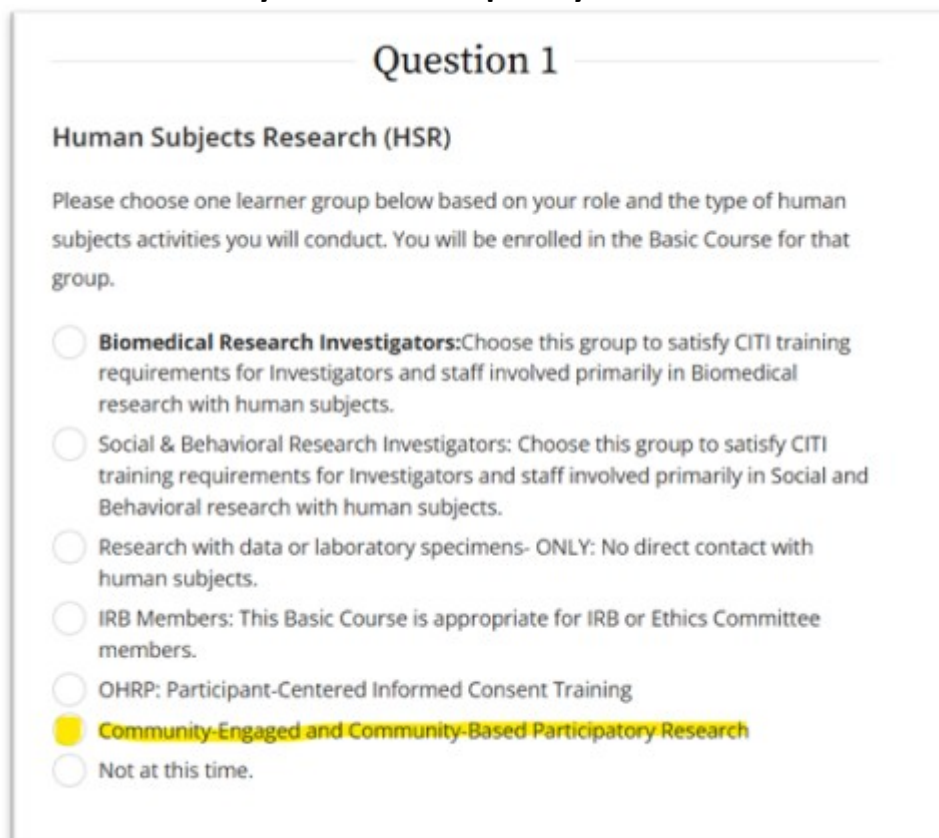
Instructions for enrolling

- Users should log in to the CITI program

- From the welcome page, scroll down to bottom of the page and click **Add a Course**



- From Question 1, select the second to last option **Community-Engaged and Community-Based Participatory Research**

A screenshot of a form titled "Question 1" with the subtitle "Human Subjects Research (HSR)". The text asks the user to choose one learner group based on their role and the type of human subjects activities they will conduct. There are seven radio button options: "Biomedical Research Investigators", "Social & Behavioral Research Investigators", "Research with data or laboratory specimens- ONLY: No direct contact with human subjects.", "IRB Members", "OHRP: Participant-Centered Informed Consent Training", "Community-Engaged and Community-Based Participatory Research" (highlighted in yellow), and "Not at this time.".



- Then scroll to the very bottom of the page and click **Submit** which will enroll them in the course