



# Strategic Plan

## 2026-2028

### The Center for Advancing Rural Health Equity

<https://www.dartmouth-health.org/carhe>

CARHE@hitchcock.org





# Table of Contents

**Strategic Planning Process ..... 3**

**Strategic Planning Timeline ..... 4**

**Guiding Our Focus: Vision, Mission, Values & Principles ..... 5**

**Goals & Objectives ..... 6**

**➤ Goal 1 ..... 7**

**➤ Goal 2 ..... 8**

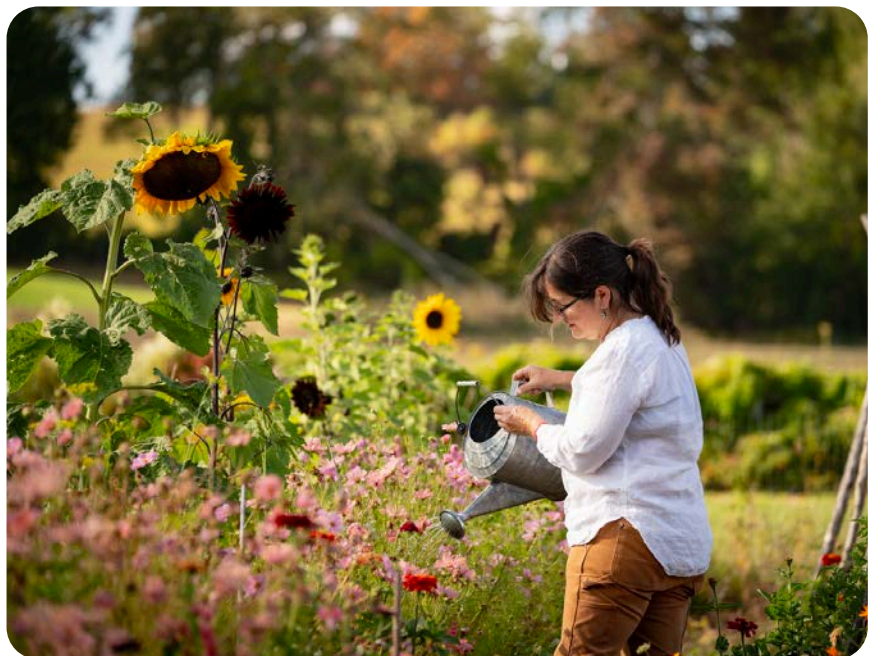
**➤ Goal 3 ..... 9**

**➤ Goal 4 ..... 10**

## Strategic Planning Process

The CARHE Leadership Council convened six times over 12 months in 2025 to develop our strategic plan. We developed this plan based on our three years of experience since launching in 2022 and in response to an evolving rural health equity landscape. The CARHE Leadership Council, which includes individuals across healthcare, research, education, and community services, oversees CARHE's strategic direction with input from a group of Affiliate Members from the community. We wanted our plan to be flexible and adaptable. We remain grounded in our mission, vision, and values. Our principles continue to guide how we do our work. With a strong set of core beliefs, our strategic plan outlines four goals with corresponding objectives to help us advance our mission: to make sure that people in rural areas have the chance to live healthy lives, by learning and acting together in our rural communities.

***Our vision is that everyone living in rural communities has the chance to thrive, feel safe, and be welcomed.***



## Strategic Planning Timeline



## Guiding Our Focus: Vision, Mission, Values & Principles

### Vision



Our vision is that everyone living in rural communities has the chance to thrive, feel safe, and be welcomed.

### Mission



Our mission is to make sure that people in rural areas have the chance to live healthy lives, by learning and acting together in our rural communities.

### Values

Commitment

Action

Respect

Humility

### Principles

Equity

Inclusivity

Co-Creation

Stewardship

Transparency

Accountability

Shared Leadership

Shared Learning



## CARHE Strategic Plan Goals

### Goal 1

Work as partners to reduce health disparities by strengthening systems of care



### Goal 2

Mobilize cross-sector partners to take action on rural health equity



### Mission



To make sure that people in rural areas have the chance to live healthy lives, by learning and acting together in our rural communities



### Goal 3

Continuously improve the model of partnership & support



### Goal 4

Ensure sustainable impact

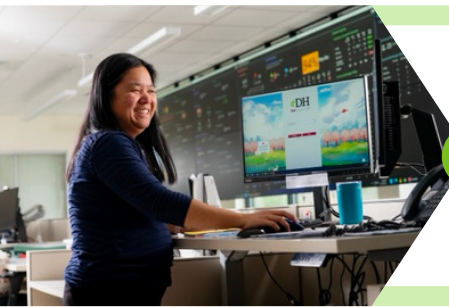
## Goal 1:

### Work as partners to reduce health disparities by strengthening systems of care



Change policy, structure, process, and/or culture to decrease health disparities of northern New England populations through community-centered programs and capacity building

### Objectives 2026/7:



1

Provide technical assistance and project management to five community-centered, multi-disciplinary teams to measurably\* decrease health disparities



2

Sponsor at least one advocacy training session tailored to rural community priorities, with a minimum of 70% of attendees representing diverse communities/groups



3

Provide one co-designed workshop series to foster cross-sector skill building on issues communities themselves have identified as most impactful

*\* We will use project and process level data to demonstrate changes that could reasonably impact health disparities (this may not be measurable at the population level).*

## Goal 2:

### Mobilize Cross-Sector Partners to Take Action on Rural Health Equity



Leverage, expand, and connect to increase awareness and interest, promote partnerships, and spread lessons learned and best practices for addressing health disparities

#### Objectives 2026/7:



1

Engage at least 100 people in cross-sector\* events focused on rural health equity topics, with at least 70% reporting that the event increased their knowledge or capacity to take action



2

Reach at least 500 people through bi-monthly CARHE newsletter highlighting health equity issues

*\*Cross-sector includes four pillars—healthcare, research, education, community services—and others such as business, public sector, etc.*



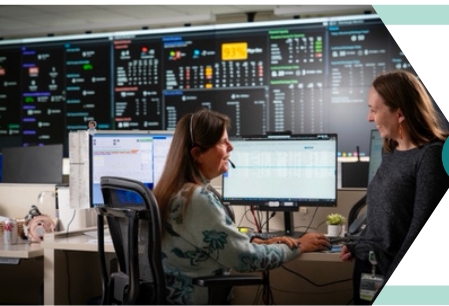
## Goal 3:

### Continuously Improve the Model of Partnership and Support



Engage partners in the continuous gathering and use of data to improve CARHE projects and programs

#### Objectives 2026/7:



1

Collect and review data aligned with CARHE principles from all CARHE-supported projects and activities, synthesize data, and disseminate key themes



2

Develop a process for ongoing review of CARHE data across CARHE projects/activities and document recommended improvements based on data

## Goal 4:

### Ensure Sustainable Impact



Develop sustainable strategies, resources, and partnerships to support CARHE programs now and in the future

### Objectives 2026/7:

**1**

Secure at least one external grant to fund CARHE activities

**2**

Increase CARHE's visibility by delivering at least one regional or national presentation and/or publishing one peer-reviewed article